



RENATE ALLER

THE SPACE BETWEEN MEMORY AND EXPECTATION

April 8th – May 13th, 2021

WEBER FINE ART



Plate 6
Installation view



THE SPACE BETWEEN MEMORY AND EXPECTATION

The interval, the space in between, is and is about the moments during which apparently nothing happens, but without which no change could happen. "The Space between Memory and Expectation" is another way to describe this state of stillness and transition.

Playing with the effect an image has on us by putting two visual representations together, or a grid of multiple images, we make the connection of multiple experiences as we would in the linguistic world where the placement of multiple words creates the meaning depending on their placement and relationship to each other.

Renate Aller creates an experience for the viewer upon entering the exhibition space. The visitor feels embraced by a continuous landscape. The eye is guided from one sweeping landscape to the next without doubting their separateness in location and origin. She intentionally pairs images for each installation, playing with both representation and abstraction to form an immersive environment to show the interconnectedness of distant environments.

Plate 106
German Alps, 2019
Archival pigment print



Plate 129
Patagonia, Chile, 2019
Archival pigment print



Plate 73
Atlantic Ocean, USA, 2018
Archival pigment print



Plate 118
Patagonia, Chile, 2019
Archival pigment print



Plate 70
Atlantic Ocean, USA, 2010
Archival pigment print



Plate 79
New Mexico, USA, 2012
Archival pigment print



Plate 124
Patagonia, Chile, 2019
Archival pigment print

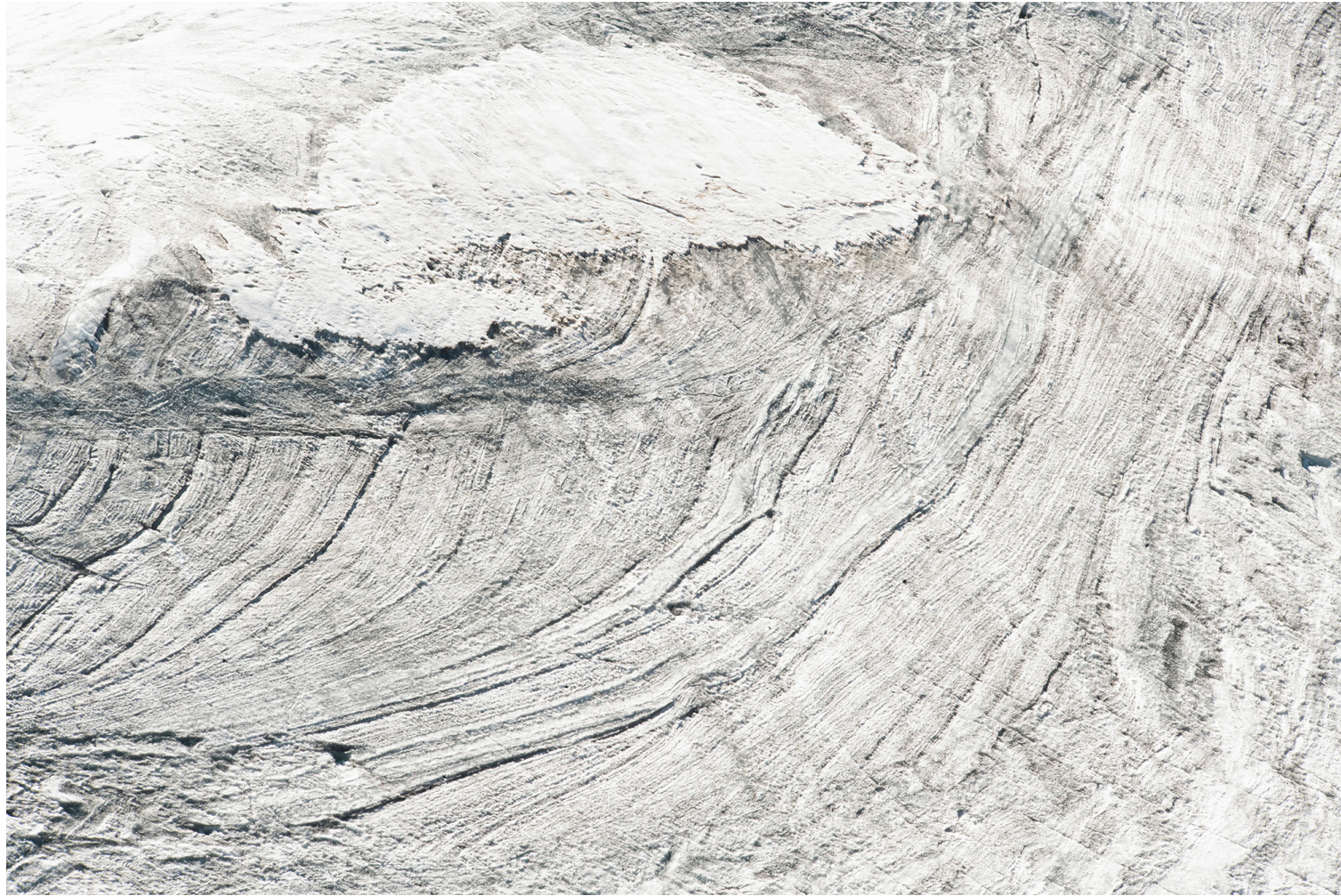


Plate 107
German Alps, 2020
Archival pigment print



Plate 75
Atlantic Ocean, USA, 2020
Archival pigment print



Plate 6
Dolomites, Italy, 2016
Archival pigment print



Plate 21
Himalayas, Nepal, 2016
Archival pigment print

RENATE ALLER

Born in Germany, Renate Aller currently lives and works in New York. Her work is in the collections of corporate institutions, private collectors, and museums, including Lannan Foundation, Santa Fe, NM, National Gallery of Art, Washington, DC, Yale University Art Gallery, CT, George Eastman House, Rochester, NY, New Britain Museum of American Art, CT, Hamburger Kunsthalle, Hamburg, Germany, Chazen Museum of Art, Madison, WI, New York Historical Society Museum, NY, Musée des beauxarts Le Locle, Switzerland and Parrish Art Museum, Watermill, NY where she recently had a solo exhibition.



ISBN 978-3-96900-027-4

Published by KEHRER VERLAG
Printed and bound in Germany
Spring, 2021

p. 4



Plate 106
German Alps, 2019
Archival pigment print
Edition of 5
40 × 60 inches
47 × 67 inches (framed)

p. 6



Plate 129
Patagonia, Chile, 2019
Archival pigment print
Edition of 5
40 × 60 inches
47 × 67 inches (framed)

p. 7

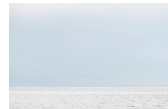


Plate 73
Atlantic Ocean, USA, 2018
Archival pigment print
Edition of 5
40 × 60 inches
47 × 67 inches (framed)

p. 8



Plate 118
Patagonia, Chile, 2019
Archival pigment print
Edition of 5
40 × 60 inches
47 × 67 inches (framed)

p. 9



Plate 70
Atlantic Ocean, USA, 2010
Archival pigment print
Edition of 5
40 × 60 inches
47 × 67 inches (framed)

p. 10



Plate 79
New Mexico, USA, 2012
Archival pigment print
Edition of 5
40 × 60 inches
47 × 67 inches (framed)

p. 11



Plate 124
Patagonia, Chile, 2019
Archival pigment print
Edition of 5
40 × 60 inches
47 × 67 inches (framed)

p. 12

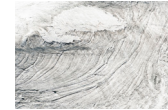


Plate 107
German Alps, 2020
Archival pigment print
Edition of 10
28 × 40 inches
33 1/2 × 47 inches (framed)

p. 13

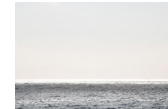


Plate 75
Atlantic Ocean, USA, 2020
Archival pigment print
Edition of 10
28 × 40 inches
33 1/2 × 47 inches (framed)

p. 14



Plate 6
Dolomites, Italy, 2016
Archival pigment print
Edition of 3
58 × 89 inches
61 × 92 inches (framed)

p. 15



Plate 21
Himalayas, Nepal, 2016
Archival pigment print
Edition of 3
58 × 89 inches
61 × 92 inches (framed)

* Prints available in 3 sizes

SPECIAL THANKS TO:

Renate Aller who we have collaborated with for nearly a decade.

Makeda Best, Richard L. Menschel Curator of Photography at the Harvard Art Museums, and **Courtney J. Martin**, Director of the Yale Center for British Arts, for the text contributions to "The Space Between Memory and Expectation".

Photo book published by **Kehrer Verlag** ISBN 978-3-96900-027-4
www.kerhverlag.com

Contact

12 Havemeyer Place Greenwich, CT
p: 203 422 5375
lee@weberfineart.com
michelle@weberfineart.com